

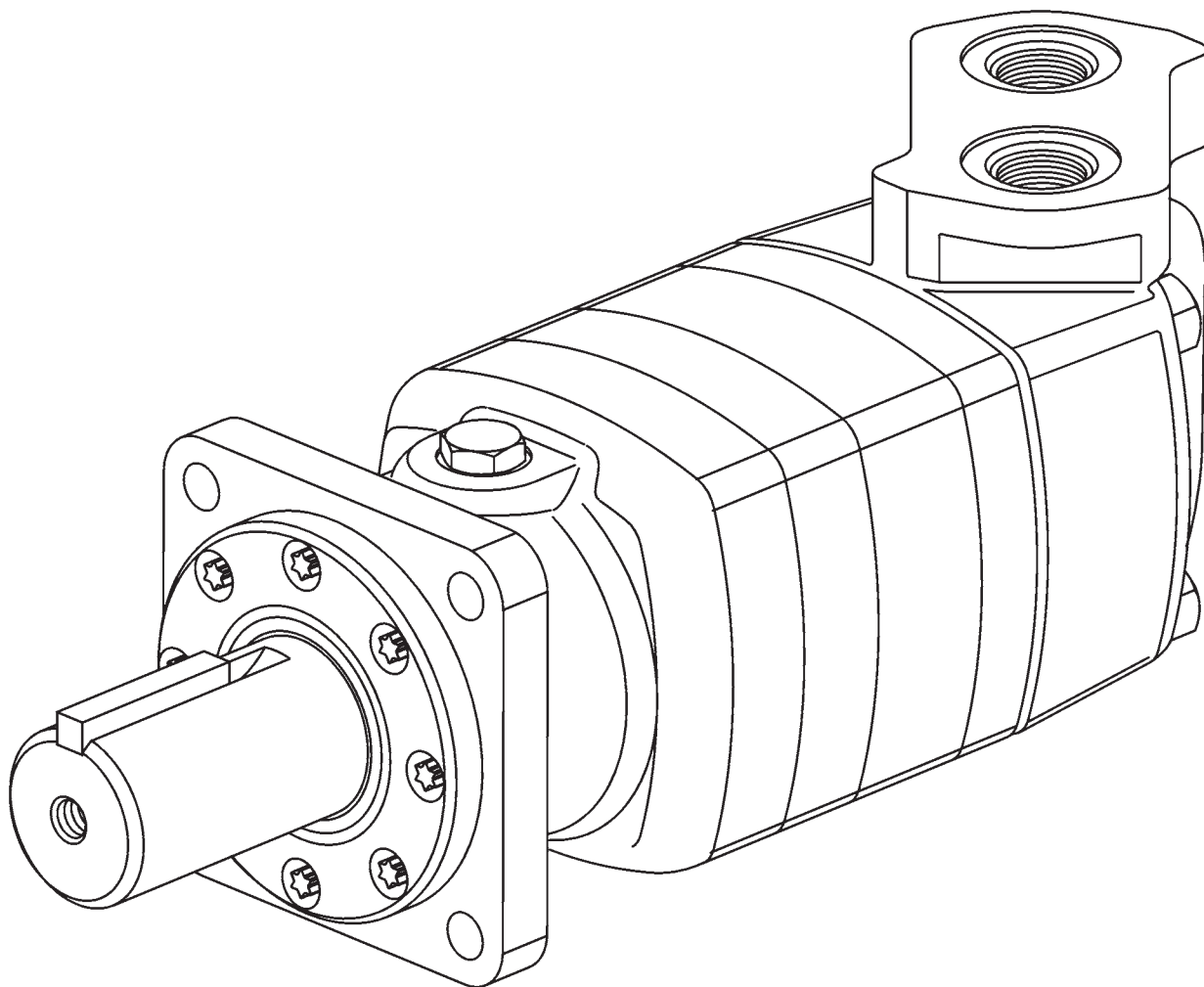


Char-Lynn

Disc Valve Hydraulic Motors

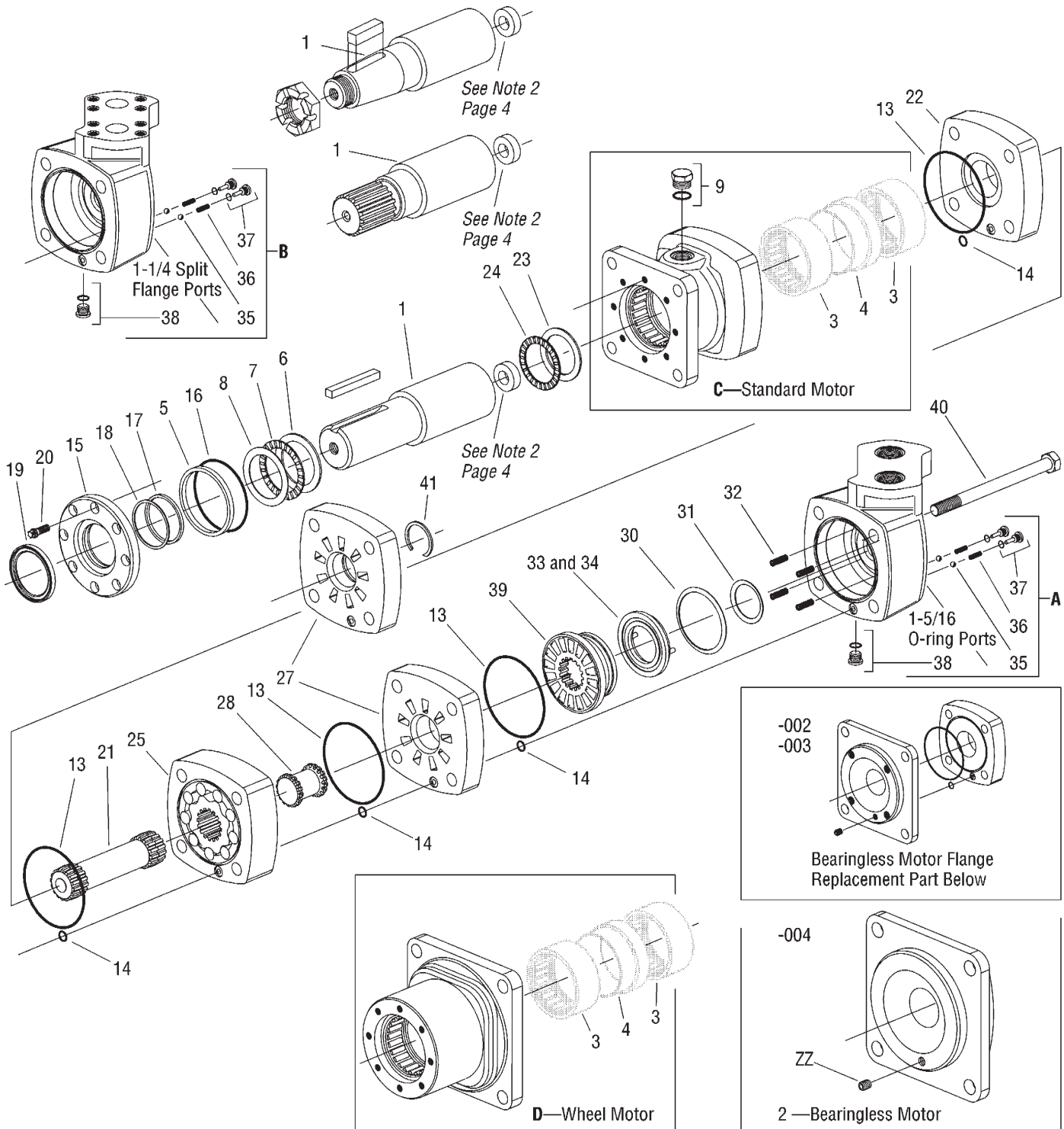
10,000 Series
Geroler® Motors

002 003 004



10,000 Series Geroler Motor Parts Drawing

Displ. cm ³ /r [in ³ /r]	Ref. No. 40 Screw, Cap -002, -003 and -004 **		-004 Bearingless Motor		Ref. No. 25 Geroler®		Ref. No. 21 Drive	
	Part No.	Length mm [in.]	Part No.	Length mm [in.]	Part No.	Width mm [in.]	Part No.	Length mm [in.]
345 [21.0]	14410-003	185,7 [7.31]	14410-001	158,2 [6.23]	8573-001	32,1 [1.26]	6395-000	157,0 [6.18]
480 [29.3]	14410-004	198,9 [7.83]	14410-002	172,5 [6.79]	8573-002	44,7 [1.76]	6221-000	169,7 [6.68]
665 [40.6]	14410-004	198,9 [7.83]	14410-002	172,5 [6.79]	8573-003	44,7 [1.76]	6221-000	169,7 [6.68]
940 [57.4]	14410-005	217,4 [8.56]	14410-003	185,7 [7.31]	8573-004	63,2 [2.49]	6167-000	188,3 [7.41]



10,000 Series Parts List

Ref. No.	Part Number	Description	Quantity Per Unit		
			Standard	Wheel	Bearingless
1	8484-000	Shaft S/A (2-1/4 in. Str. w/o Thread)	1	1	—
	14395-016	Key (Str. Shaft)	1	1	—
	8483-000	Shaft S/A (2-1/4 in. Tapered)	1	1	—
	14396-012	Key (Tapered Shaft)	1	1	—
	6340-000	Nut (Tapered Shaft)	1	1	—
	8482-000	Shaft S/A (2-1/8 in. 30° 16T Involute Spline)	1	1	—
2	8918-000	Flange, Mounting /Wear Plate	—	—	1
3	9003-002	Bearing, Radial	2	2	—
4	6181-000	Spacer, Bearing	1	1	—
5	6175-000	Spacer, Bearing Front	1	1	—
6	9001-004	Washer, Thrust	1	1	—
7	9002-004	Bearing, Front Thrust	1	1	—
8	9001-003	Washer, Thrust (Thin)	1	1	—
9	9070-007	Plug/O-ring S/A	2	—	—
X	250003-910	O-ring (Ref. No. 9)	2	—	—
X 13	9022-013	O-ring	4	4	(Note 1)
X 14	15042-000	O-ring	4	4	(Note 1)
15	8731-000	Retainer, Front	1	1	—
† 16	15045-000	O-ring	1	1	—
† 17	9004-002	Ring, Quad	1	1	—
† 18	8732-000	Washer, Backup	1	1	—
† 19	6212-000	Seal, Dust	1	1	—
20	16292-100	Screw, Cap	8	8	—
21	*	Drive, Main	1	1	1
22	8958-000	Plate, Wear	1	1	—
23	9001-002	Washer, Rear Thrust	1	1	—
24	9002-003	Bearing, Rear Thrust	1	1	—
25	*	Geroler	1	1	1
27	8957-000	Plate, Valve	1	1	1
	23864-000	Plate, Valve	—	—	1***
28	6168-000	Drive, Valve	1	1	1
X 30	6176-000	Seal, Outer Face	1	1	1
X 31	6177-000	Seal, Inner Face	1	1	1
32	6203-000	Spring, Compression	4	4	4
33 and 34	21318-000	Balance Ring/Pin Assembly	1	1	1
35	18026-000	Ball	2	2	2
36	6464-000	Spring, Compression	2	2	2
37	8350-000	Plug/O-ring S/A	2	2	2
X	250003-903	O-ring (Ref. No. 37)	2	2	2
38	9072-005	Plug/O-ring S/A	1	1	1
X	250003-906	O-ring (Ref. No. 38)	1	1	1

(Continued on Back Page)

(Continued from Previous Page)

Ref. No.	Part Number	Description	Quantity Per Unit		
			Standard	Wheel	Bearingless
39	6792-000	Valve	1	1	1
40	*	Screw, Cap (replaces and interchanges with studs)	4	4	4
41	16296-168	Ring, Retaining	—	—	1***
A	62506-000	Kit, Housing, Valve (1-5/16 O-ring Ports)	1	1	1
B	62505-000	Kit, Housing, Valve (1-1/4 Split Flange Ports)	1	1	1
C	62006-000	Kit, Housing, Bearing (Std. Motor)	1	—	—
D	62008-000	Kit, Housing, Bearing (Whl. Motor)	—	1	—
X	6405-000	Seal Kit, Motor (Contains Part Indicated by X)	1	1	1
†	6406-000	Seal Kit, Shaft (Contains Part Indicated by †)	1	1	—

* See Chart on Page 2

**With 8918-000 Flange, no Wear Plate (Ref. No. 22) is used and -004 Bearingless Motor bolt length is required.

***940 cm³/r [57.4 in³/r] Bearingless motor only.

Note 1: The -002 and -003 Bearingless motors use 4 O-rings while -004 motor uses 3 O-rings.

Note 2: DO NOT use spacer with current replacement shafts (Ref. No. 1). Motors with this shaft spacer (6171-000) will still have to be reassembled with spacer unless the shaft was damaged and must be replaced.

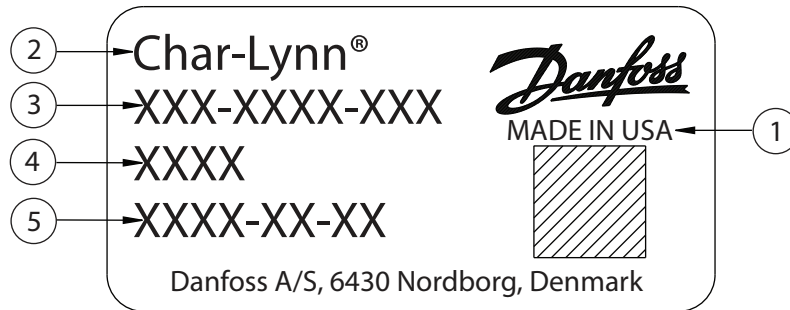
Product Numbers—10,000 Series Motors

Mounting	Shaft	Ports	Displ. cm ³ /r [in ³ /r] Product Number			
			345 [21.0]	480 [29.3]	665 [40.6]	940 [57.4]
Standard	2-1/4 in. Straight	1-5/16 O-ring	119-1028	-1029	-1030	-1031
		1-1/4 Split Flange	119-1040	-1041	-1042	-1043
	2-1/8 Inch 16 T Splined	1-5/16 O-ring	119-1032	-1033	-1034	-1035
		1-1/4 Split Flange	119-1044	-1045	-1046	-1047
	2-1/4 Inch Tapered	1-5/16 O-ring	119-1036	-1037	-1038	-1039
		1-1/4 Split Flange	119-1048	-1049	-1050	-1051
Wheel Motor	2-1/4 in. Straight	1-5/16 O-ring	120-1005	-1006	-1007	-1008
		1-1/4 Split Flange	120-1017	-1018	-1019	-1020
	2-1/8 Inch 16 T Splined	1-5/16 O-ring	120-1009	-1010	-1011	-1012
		1-1/4 Split Flange	120-1021	-1022	-1023	-1024
	2-1/4 Inch Tapered	1-5/16 O-ring	120-1013	-1014	-1015	-1016
		1-1/4 Split Flange	120-1025	-1026	-1027	-1028
Bearingless		1-5/16 O-ring	121-1007	-1008	-1009	-1010
		1-1/4 Split Flange	121-1011	-1012	-1013	-1014

121-1013

How to Order Replacement Parts

Label identification:



Label information:

1. Country of origin
2. Brand name
3. Product number
4. Serial number
5. Date code



Char-Lynn

Products we offer:

- Cartridge valves
- DCV directional control valves
- Electric converters
- Electric machines
- Electric motors
- Gear motors
- Gear pumps
- Hydraulic integrated circuits (HICs)
- Hydrostatic motors
- Hydrostatic pumps
- Orbital motors
- PLUS+1® controllers
- PLUS+1® displays
- PLUS+1® joysticks and pedals
- PLUS+1® operator interfaces
- PLUS+1® sensors
- PLUS+1® software
- PLUS+1® software services, support and training
- Position controls and sensors
- PVG proportional valves
- Steering components and systems
- Telematics

Danfoss Power Solutions is a global manufacturer and supplier of high-quality hydraulic and electric components. We specialize in providing state-of-the-art technology and solutions that excel in the harsh operating conditions of the mobile off-highway market as well as the marine sector. Building on our extensive applications expertise, we work closely with you to ensure exceptional performance for a broad range of applications. We help you and other customers around the world speed up system development, reduce costs and bring vehicles and vessels to market faster.

Danfoss Power Solutions – your strongest partner in mobile hydraulics and mobile electrification.

Go to www.danfoss.com for further product information.

We offer you expert worldwide support for ensuring the best possible solutions for outstanding performance. And with an extensive network of Global Service Partners, we also provide you with comprehensive global service for all of our components.

Local address:

Hydro-Gear

www.hydro-gear.com

Daikin-Sauer-Danfoss

www.daikin-sauer-danfoss.com

**Danfoss
Power Solutions (US) Company**
2800 East 13th Street
Ames, IA 50010, USA
Phone: +1 515 239 6000

**Danfoss
Power Solutions GmbH & Co. OHG**
Krokamp 35
D-24539 Neumünster, Germany
Phone: +49 4321 871 0

**Danfoss
Power Solutions ApS**
Nordborgvej 81
DK-6430 Nordborg, Denmark
Phone: +45 7488 2222

**Danfoss
Power Solutions Trading
(Shanghai) Co., Ltd.**
Building #22, No. 1000 Jin Hai Rd
Jin Qiao, Pudong New District
Shanghai, China 201206
Phone: +86 21 2080 6201