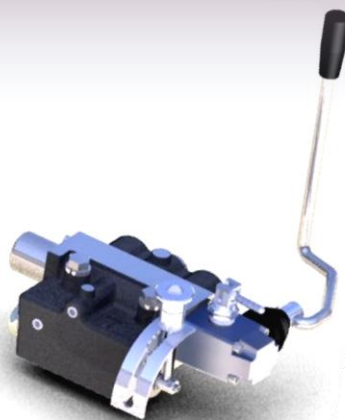




PRODUCT OVERVIEW





PRODUCT OVERVIEW

MONOBLOCK VALVES

KVM 05

KVM05 is a single spool 35lpm capacity monoblock valve. Typical applications are on; power packs, small cranes, agricultural machines and tractors.



KVM 10 SERIES

KVM10 is one of the most popular product group in the industry, produced from single spool up to six spools covering around 45lpm capacity. KVM10 series are used for the perfect control on the following applications; refuse (garbage) trucks, agricultural machinery, hydraulic platforms, hydraulic presses and outriggers of cranes and concrete pumps, front-end loaders.



KVM 15 SERIES

KVM15 is a 70lpm monoblock valve series available up to six spools. As having a capacity of 70lpm KVM15 series are used in larger machines and bigger pumps. Typical applications are; hydraulic presses, outriggers of cranes and concrete pumps, garbage and tipping trucks, hydraulic platforms, front-end loaders etc.



KVM 16 SERIES

KVM16 series are our largest and newest monoblock valve group. Now being produced only two and three spools, but soon will be available up to six spools. Current applications are tractors front loaders and back-hoes.





PRODUCT OVERVIEW

SECTIONAL VALVES

KV 10 SERIES

KV10 series are available up to 9 spools with 70lpm flow rate in standard.



KV 15 SERIES

KV15 series are available up to 9 spools with 80lpm flow rate in standard. Secondary valves are available. Standard applications for our KV15 series are; refuse (garbage) trucks, back-hoes, hydraulic presses, hydraulic cranes, tractors etc.



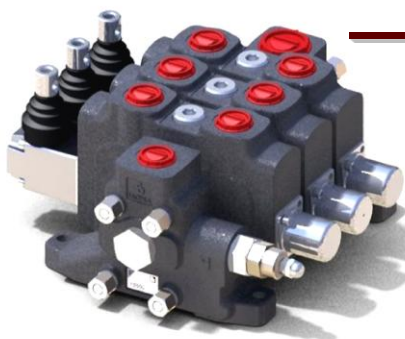
KV 18 SERIES

KV18 series are available up to 9 spools with 120 lpm flow rate in standard. Secondary valves are available. Standard applications for our KV18 series are; refuse (garbage) trucks, cranes, hydraulic presses, back-hoes, wheel loaders etc.



KV 20 SERIES

KV20 is the largest valve in our product range with capacity of 150 lpm flow rate and available up to 9 spools. Secondary valves are also available for KV20 series. This group serves as an ideal control device for the following applications; wheel loaders, back-hoes, refuse (garbage trucks), roll-off trucks, hydraulic presses, mining machinery, etc.



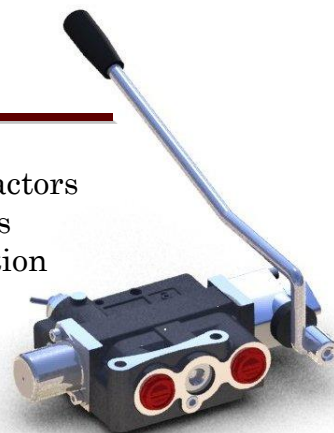


PRODUCT OVERVIEW

TRACTOR VALVES

AST 08

AST 08 is a specially designed auxiliary valve for STEYR tractors having a flow rate capacity of 45lpm. The switch lever that is attached to the valve enables the control of single-double action hydraulic attachments on the tractor.



AMF 01

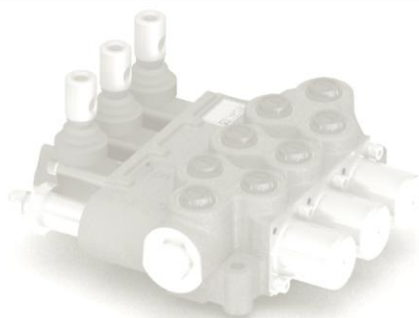
AMF 01 is simple to attach and use, specially designed auxiliary hydraulic valve for MASSEY FERGUSON tractors having 50lpm flow rate capacity. This valve provides unique controls to all operations of hydraulic attachments on these tractor.





PRODUCT OVERVIEW

ADDITIONAL PROPERTIES



VALVE GROUPS	MONOBLOCK SERIES	KVM05				✓		✓		
		KVM10				✓	✓	✓	✓	✓
		KVM15				✓	✓	✓		✓
		KVM16	✓	✓	✓	✓	✓	✓		✓
	SECTIONAL SERIES	KV10				✓	✓	✓		✓
		KV15	✓	✓	✓	✓	✓	✓		✓
		KV18	✓	✓	✓	✓	✓	✓		✓
		KV20	✓	✓	✓	✓	✓	✓		✓
	TRACTOR SERIES	AST08				✓				
		AMF01				✓				



AKON HIDROLİK VALF A.S.

A.O.S.B. 10000 SOK. No:22 Cigli / Izmir / TURKIYE

Tel: +90.232.376 79 99

Fax: +90.232.376 80 78

E-mail: info@akon.com.tr sales@akon.com.tr